

Vivapure Anti-HSA Kit

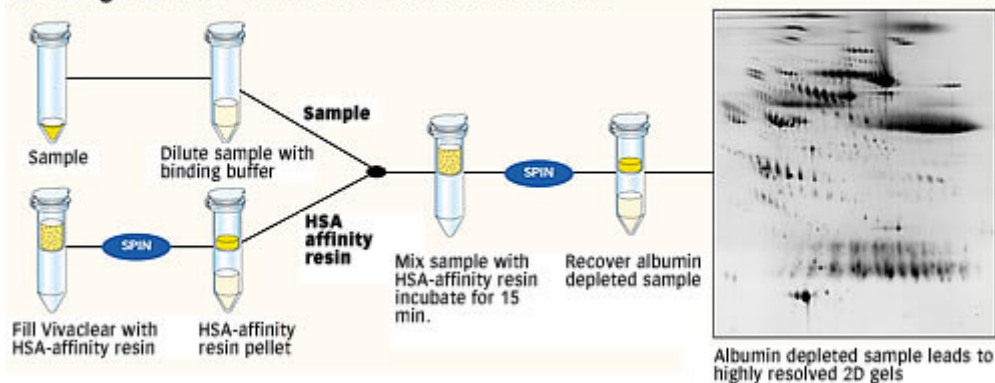
Highly specific human albumin depletion with unique antibody fragments

Reveal your proteom - see previously undetectable proteins

Human serum was analysed before and after albumin removal by IEF and 2D PAGE. The comparison of the two gels clearly demonstrates the increased resolution, leading to the visualisation of lower abundance proteins achieved with the Vivapure Anti-HSA Kit.



Handling overview - Albumin removal in 20 minutes



The Vivapure Advantage:

- Highly specific antibody fragments >95% albumin removal from human serum
- No cross reactivity with other human proteins
- Compatible with all downstream proteomics applications due to low salt concentrations in the buffer
- Fast 20 min. protocol
- Easy-to-use spin column based protocol for parallel processing
- Flexibility in sample volume to be depleted

Low non-specific binding

The Vivapure Anti-HSA Kit for Human Albumin depletion specifically removes the highest abundant protein from human samples, albumin. The highly specific albumin-affinity resin utilized, shows no cross reactivity with other serum proteins. Thereby, the Vivapure Anti-HSA Kit reproducibly allows the visualisation and analysis of previously undetectable proteins.

Easy, flexible and fast albumin removal

The centrifugal format of the Vivapure Anti-HSA Kit for Human Albumin depletion allows easy and fast sample processing. Additionally, as samples have varying albumin concentrations, the flexibility is offered of using as much affinity resin as necessary for every individual sample.

Albumin removal from different sources

The Vivapure Anti-HSA kit provides a specific affinity resin for binding and removing human serum albumin from a given human sample. However, the same protocol can be used for albumin depletion from rat and mouse samples, reaching removal rates of 50-80%.

Vivapure Anti-HSA Kit for Human Albumin Depletion

Cat. No.	VS-SP08HAR
HSA-affinity resin (50 % slurry)	5 ml
Clarification spin columns (Vivaclear)	12
Collection tubes (2 ml)	24
Binding Buffer	15 ml

Specifications

HSA-affinity resin binding capacity (suspension containing 50% packed medium)	2 mg/ml
Clarification device max. volume capacity	500 µl
Recommended centrifugation speed	400 x g

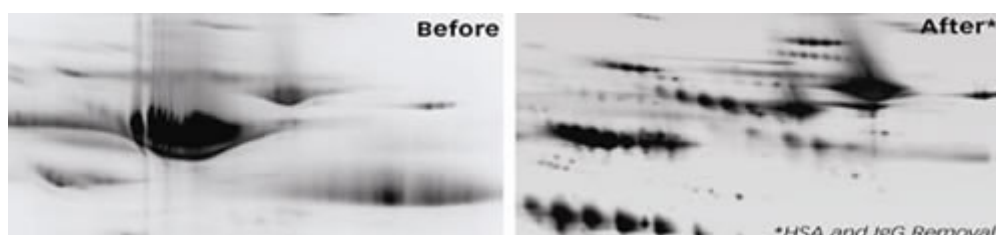
This kit contains a complete set of consumables required for albumin removal from 12 x 20 µl samples of human serum. Larger sample volumes can also be processed using this kit.

Vivapure Anti-HSA/IgG Kit

Highly specific human albumin and IgG depletion with unique antibody fragments and Protein G

Reveal your proteome - see previously undetectable proteins

Human serum was analysed before and after albumin/IgG removal by IEF and 2D PAGE. The comparison of the two gels clearly demonstrates the increased resolution, leading to the visualisation of lower abundance proteins achieved with the Vivapure Anti-HSA /IgG Kit.



Vivapure Anti-HSA/IgG Kit Advantages

- Antibody based albumin removal » Efficient albumin removal with minimal loss of potential serum biomarkers
- Protein G based IgG removal » Efficient IgG removal. Also applicable to mouse and rat samples
- 20 minute protocol employing spin tubes » Quick, suitable for parallel processing
- Depleted protein recovered in low salt buffer » Sample is ready for next step in fractionation process
- Resin packaged as a slurry » Flexibility in serum sample volumes
- Kit format » Ready to use, no wastage
- Priced for single use » No risk of cross contamination

Low non-specific binding

The Vivapure Anti-HSA /IgGKit for Human Albumin and IgG depletion specifically removes the highest abundant protein from human serum. The highly specific Albumin/IgG-Affinity Resin utilized, shows no cross reactivity with other serum proteins. Thereby, the Vivapure Anti-HSA/IgG Kit reproducibly allows the visualisation and analysis of previously undetectable proteins.

Sartorius Croatia - Libra elektronik d.o.o.
Savska 45A, 10 290 Zaprešić
Ovlašteno zastupstvo i servis Sartorius RH
Sartorius.Croatia@email.t-com.hr, service@sartorius.hr
www.Sartorius.hr
Tel: 01 3340-290/291/293/295/296, fax: 01 3340-299
P.J. Solin, Zgon 80, 21210 Solin, 091 563 2266

Easy, flexible and fast albumin removal

The centrifugal format of the Vivapure Anti-HSA/IgG Kit for Human Albumin and IgG depletion allows easy and fast sample processing. Additionally, as samples have varying albumin concentrations, the flexibility is offered of using as much Affinity Resin as necessary for every individual sample.

Albumin removal from different sources

Vivapure Anti-HSA/IgG kit provides a specific Affinity Resin for binding and removing human serum albumin and IgG from a given human sample.

However, the same protocol can be used for albumin depletion from rat and mouse samples, reaching removal rates of 80-90%.

Vivapure Anti-HSA/IgG Kit for Human Albumin and IgG Depletion

Cat. No.	VS-SP08HAIGG
Anti-HSA/IgG-affinity resin (50 % slurry)	5,5 ml
Clarification spin columns (Vivaclear)	12
Collection tubes (2 ml)	24
Binding Buffer	15 ml

Specifications

Anti-HSA/IgG-affinity resin binding capacity 1.8 mg/ml Albumin
(suspension containing 50% packed medium) 0.6 mg/ml IGG

Clarification device max. volume capacity 500 µl

Recommended centrifugation speed 400 x g

This kit contains a complete set of consumables required for albumin removal from 12 x 20 µl samples of human serum. Larger sample volumes can also be processed using this kit.

Vivapure Anti-HSA Affinity Resin

Highly specific human albumin depletion with unique antibody fragments

Easy, flexible and fast albumin removal

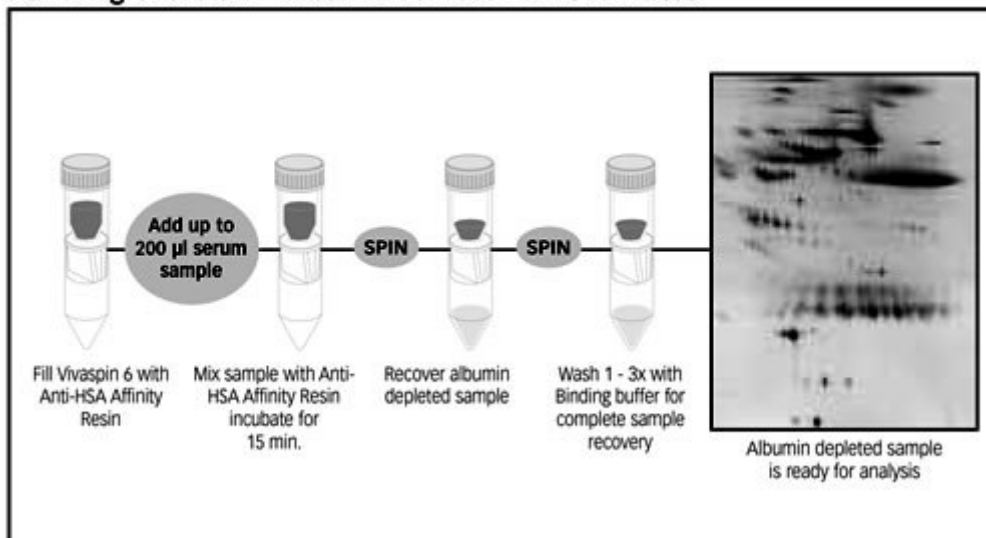
This entirely flexible format enables researchers to deplete serum albumin from up to 400 µl serum in spin columns. Single samples are processed in the recommended Vivaspin 6 and Vivaspin 20 devices within 40 minutes. However, this method is just as convenient for parallel processing of several samples simultaneously using standard laboratory equipment. The Vivapure Anti-HSA Affinity Resin is priced for one time usage, which is especially recommendable when working with patient serum for biomarker detection.



Reveal your proteome - see previously undetectable proteins

Human serum was analysed before and after albumin removal by IEF and 2D PAGE. The comparison of the two gels clearly demonstrates the increased resolution, leading to the visualisation of lower abundance proteins achieved with the Vivapure Anti-HSA Kit.

Handling overview - Albumin removal in 40 minutes



Vivapure Anti-HSA Affinity Resin Advantages

Antibody based albumin removal with 2 mg/ml capacity (50% slurry)

» Efficient albumin removal with minimal loss of potential serum biomarkers

40 min. protocol for depleting albumin from 200 µl serum in spin column

» Quick, suitable for parallel processing

Resin packaged as slurry » Flexibility in serum sample volumes

Priced for single use » No risk of cross contamination

Recommended Anti-HSA Affinity Resin volume for albumin depletion from human serum

Serum (µl)	10	20	50	100	200	400
Anti-HSA Resin (ml)	0.2	0.4	1	2	4	8
Device	Vivaclear	Vivaclear	Vivaspin 6	Vivaspin 6	Vivaspin 6	Vivaspin 20

Vivapure Anti-HSA Affinity Resin for Human Albumin Depletion

Cat. No.	VS-SP50HAR
HSA-affinity resin (50 % slurry)	50 ml
Instruction manual	1

Specifications

HSA-affinity resin binding capacity
(suspension containing 50% packed medium) 2 mg/ml